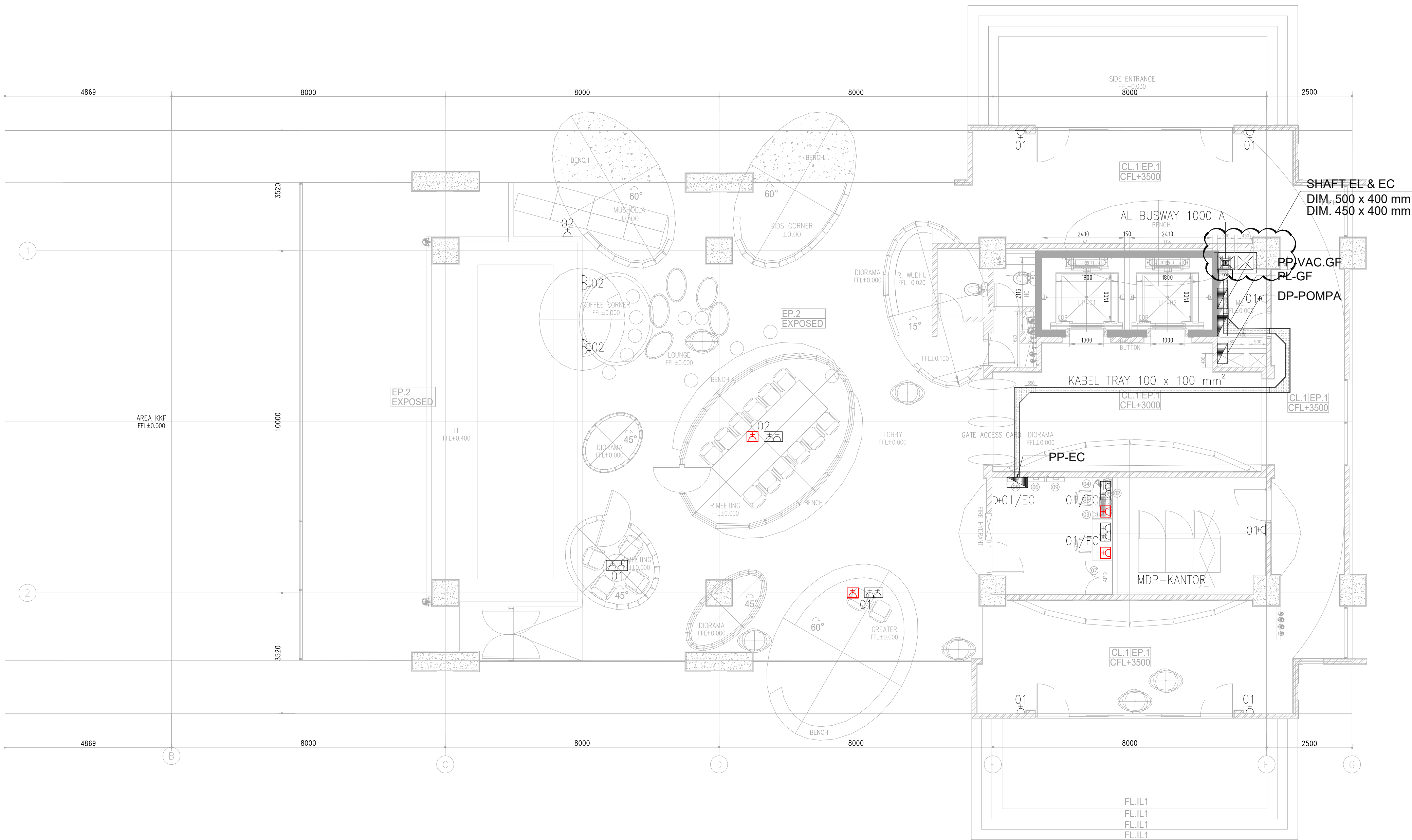



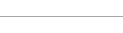





KETERANGAN :	
	STOP KONTAK 16A 1Ø, 200W
	STOP KONTAK HAND DRYER
	16A 1Ø, 1.500W
	STOP KONTAK MEJA 3PCS
	16A 1Ø, 450W
	RAK KABEL
	PANEL DISTRIBUSI



<div>OWNER/CLIENT</div> <div></div> <div>sawit</div> <div>APPROVED : .../.../...</div> <div><div>..... (name)</div><div>..... (position)</div><div>..... (Dep./Div.)</div><div>(signed)</div></div>	<div>PROJECT</div> <div><div>BPDP</div><div>KELAPA SAWIT</div></div> <div>Jl. Medan Merdeka Tim, RT.7/RW.1, Gambir, Kec. Gambir, Kota Jakarta Pusat, Daerah Khusus Ibukota Jakarta 10110</div>	<div>INTERIOR DESIGN CONSULTANT</div> <div><div>PT. MADEA AGKASAMA</div><div>Jl. Hati Suci No. 4 Gd. Sakura Lt. 2 Room 201 Kel. Kampung Bali, Kec. Tanah Abang, Jakarta Pusat Telp. 021 - 2303483 , Fax. 021 - 2303483</div><div>APPROVED : //</div></div>	<div>MEP CONSULTANT</div> <div><div>PT. DUTA PRATAMA ENGINEERING</div><div>MECHANICAL &amp; ELECTRICAL ENGINEER</div><div><small>Rukan Taman Meruya Blok M No. 37, Jl. Batu Mulia No. 1 Meruya Utara Kembangan – Jakarta Barat 11620 Phone : 021-5845546, 5845547, 5845556, Fax : 021-58474531 Email : dpept.me@gmail.com, pt.dpe.me@yahoo.com</small></div></div>	<div>DRAWING TITLE</div> <div>DENAH INSTALASI KOTAK KONTAK RAK KABEL &amp; POSISI PANEL LANTAI GF</div>	<div></div> <div></div> <div></div> <div></div> <div></div> <div>#</div>	<div>...</div> <div>...</div> <div>...</div> <div>...</div> <div>...</div> <div>REVISION :</div>	<div>...</div> <div>...</div> <div>...</div> <div>...</div> <div>...</div> <div>DATE</div>	<div>DRAWN</div> <div>Sangaji</div> <div>DATE : 15/05/24</div>	<div>DRAWING NUMBER</div> <div>EL-301</div>				
					</								